

A. Pre-Installation Precaution



1. Use Seat and Floor protectors to avoid damage to surfaces

Disconnecting the battery prior to any ground or harness removal/ tapping to prevent possible vehicle damage is recommended. The battery may be temporarily reconnected to perform such tasks as power seat repositioning/ testing or taking the vehicle out of gear. Once tasks are completed disconnect battery until installation is complete and vehicle is reassembled. If the vehicle is equipped with an Anti-theft radio, the code must be written down prior to disconnecting the battery cable. The code must be re-entered when the negative battery cable is re-installed. Disconnecting the battery may cause certain vehicle settings to be lost. Manufacturer's recommendations for the battery removal should be followed.

B. Disassemble the Vehicles Seat Back

1. Locate the 2 plastic pins at the bottom of the seat back and remove them with a plastic panel remover (Figure B1)
2. Pull on the bottom of the Seat Back to release the plastic locking clips. (Figure B2)
3. Pull down on the Seat Back to release the Seat Back Cover. (Figure B3)
4. Unplug the Fiber Optic light located on the Seat Back. (Figure B4)
5. Place Seat Back on a soft surface for latter re-installation. (Figure B5)

Figure B1



Figure B2

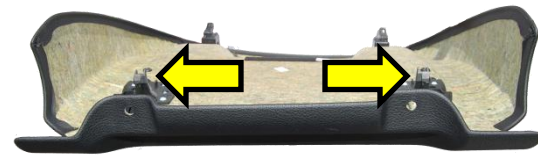


Figure B3



Figure B4

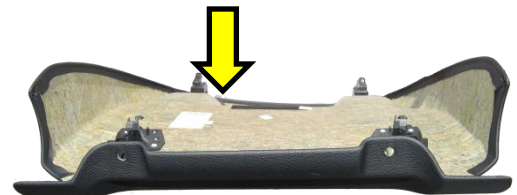


Figure B5



C. Locating the Seats Mounting Bracket

1. Locate the 2 metal clips holding down the Vehicles Leather. (Figure B6)
2. Pull down on the Leather to release the material from the metal clips. (Figure B7)
3. Lift up on the Vehicles leather and foam to expose the metal of the seat. (Figure B8)

D. Mounting the Supplied Metal Bracket

1. Slide the supplied metal bracket over the front of the seat. (Figure B8/B9)
2. Line up the metal bracket so the outside holes line up with the holes in the seat. (Figure B9)
3. With the 2 supplied screws mount the metal plate to the seat. (Figure B9)

E. Installing the Active Tablet Assembly

1. Hold up the Active Tablet Assembly to the Metal bracket and line up the 3 holes. With the 3 supplied screws mount the Tablet Assembly to the Metal bracket. (Figure B10)

Figure B6

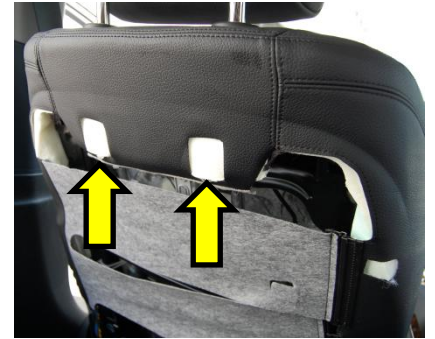


Figure B7



Figure B8



Figure B9

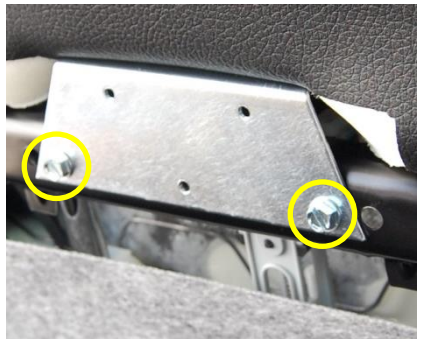


Figure B10



F. Routing of the Tablet Active Assembly Wires

2. Route the 2 cables on the side of the seat closest to the Center console. (Figure B11) **Note: Drivers side R/ Passengers side L**
3. Run both wires under the center console. (Figure B12)

G. Re-assembly of the Vehicles Seat Back

3. Slide the Seat Back into the top slots of the Seat until you feel them click in place. (Figure B13)
4. Push the bottom of the Seat Back until you feel it lock in place. (Figure B13)
5. Put the Push Pins back into the bottom of the Seat Back. (Figure B14)

H. Connecting the Power and Ground

1. With a plastic panel remover tool, remove the Air Bag plastic cover located on the Passenger's side A-pillar. (Figure B15)

Figure B11



Figure B12



Figure B13

Figure B14



Figure B15



2. Remove the T-25 Torx screw. (Figure B16)
3. Remove the A-pillar cover and set aside for latter. (Figure B17)
4. Locate the Green with Brown Strip wire in the A-pillar. (Figure B18)
5. Connect an 8 ft. piece of primary wire to the Green with Brown Strip wire in the A-pillar harness. Now run the wire to where it will go under the center console. Connect both Yellow wires of the Active Tablet System to the other end of the primary wire. Connect the 2 Black cables of the Active Tablet System to chassis ground.
6. Put the A-pillar cover back on. Reverse the steps for (Figure B16-B17).

Figure B16



Figure B17



Figure B18



