

# HindSight™

Backup Monitor System



## **LCD Monitor & CCD Color Camera**

### **Ford Models**

**Expedition—2003-2004**

**Lincoln Navigator—2003-2004**

**F150—2003-2004**

**F250—2003-2004**

**F350—2003-2004**

**F150 Crew Cab—2003-2004**

## **Installation Manual**

VIZUALOGIC®

# HindSight™

Backup Monitor System

Copyright © 2003 TMI Products, Inc.  
All Rights Reserved  
Corona, CA U.S.A.  
060300

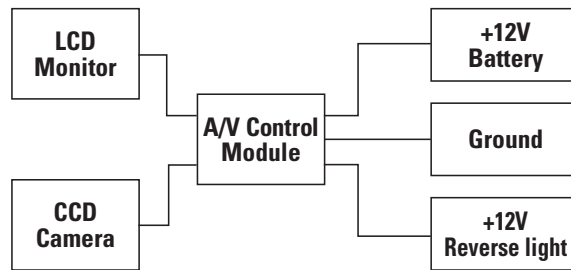
1493 Bentley Drive • Corona, CA 92879 • 909-272-1996 • 800-624-7960 • Fax 909-272-1584  
[www.vizualogic.com](http://www.vizualogic.com)

99-8019-003 10/03

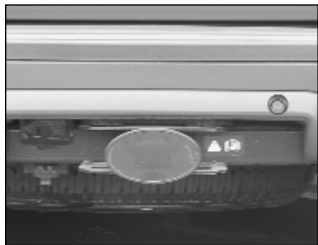
Fall 2003

## Package Contents & System Diagram

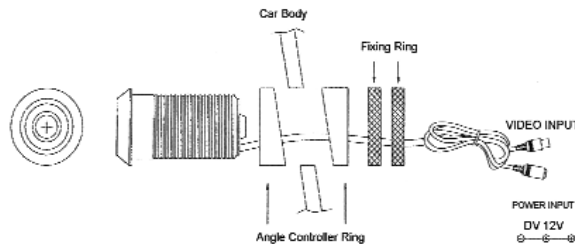
- 3.5" LCD Monitor w/Mirror Mode Display
- Color CCD Bullet-Type Camera w/Cable
- Angled Controller Rings (3 sizes)
- Fixing Rings
- A/V Control Module
- Monitor Cable



## Camera Installation



**Fig. 1**



1. Locate a suitable camera mounting location on the Car Body (i.e. rear bumper cover).
2. Drill a 1-1/8" diameter hole at that location.
3. Attach an Angle Controller Ring to the Camera Body.
4. Insert the Camera Body through the Car Body and attach the matching Angle Controller Ring to the Camera Body.
5. Secure the Fixing Rings to the threaded portion of the Camera Body.
6. Route the cable to the A/V Control Module location (i.e. center console).

## A/V Control Module Installation

1. Locate suitable A/V Control Module mounting location (i.e. under seat or alternate location).

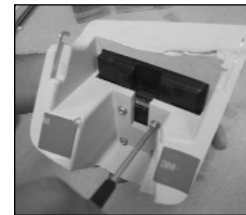
2. Attach the A/V Control Module wires as follows:

Wire Color	Connection
1. Red	+12V Battery
2. Orange	+12V Reverse Light
3. Black	Ground

3. Secure the A/V Control Module using the provided screws.

## Monitor Installation

1. Mount the monitor into the housing cavity using the provided screws. (Fig.1)
2. Route the monitor cable from the center of headliner to the A/V Control Module via the A-pillar. (Fig. 2)
3. Clean windshield prior to installation.
3. Connect the monitor cable to the LCD monitor. (Fig. 3)
4. Peel off the double-faced tape at the back of the housing. (Fig. 4)
5. Secure the (2) monitor housing rear-hooks to the headliner. (Fig. 5)
6. As soon as both hooks are in place, center the housing with respect to the rear view mirror and push it against the windshield to adhere. Installed Back-up Monitor: (Fig. 6)



**Fig. 1**



**Fig. 2**



**Fig. 3**



**Fig. 4**



**Fig. 5**



**Fig. 6**