

2018 Lincoln Navigator Install Manual



Kit Contents:

| Item # | QTY. | Component Description |
|--------|------|-------------------------------|
| 1 | 2 | Active Headrest Assembly |
| 2 | 2 | Power Post Cables |
| 3 | 2 | Sharing Post Cables |
| 4 | 2 | Power/Sharing Breakout Cables |
| 5 | 2 | Carrier Buckets A/B |
| 6 | 2 | Metal Back Plates |
| 7 | 2 | Security Covers |
| 8 | 1 | Hardware Kit |
| 9 | 1 | Box A |

Box A Contents:

| Item # | QTY. | Component Description |
|--------|------|-------------------------|
| 1 | 2 | Tablets |
| 2 | 2 | Carrying Cases |
| 3 | 2 | Home Chargers |
| 4 | 2 | Wired Zipper Headphones |
| 5 | 2 | Wireless IR Headphones |
| 6 | 1 | Quick guide |

Kit Hardware Contents

| Item # | QTY. | Component Description |
|--------|------|-----------------------|
| 1 | 4 | 10-32 Screws |
| 2 | 4 | 10-32 Nuts |
| 3 | 4 | 1/4-20 Screw |
| 4 | 4 | 1/4-20 Nuts |
| 5 | 6 | 8-32 Screws |

Recommended Tools:

| Qty. | Tool |
|------|-----------------------|
| 1 | Plastic Panel Remover |
| 1 | 7mm Standard socket |
| 1 | 10mm Standard Socket |
| 1 | Crimping Tool |
| 1 | Electrical Tape |
| 1 | Mini Fuse Tap |
| 1 | Wire Butt Connector |
| 1 | 3M® T-Tap |
| 1 | Male T-Tap Connector |

Attention

Cutting of the seatback is required in order to complete this installation. Please make sure that the customer is aware that the installation of this kit is considered to be a permanent installation.

A. Pre-Installation:

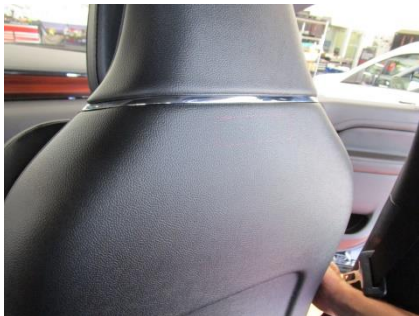
1. Make sure you have the appropriate seat and floor protectors in order to prevent any accidental damage to vehicle surfaces.
2. Before performing any disassembly of the vehicle, a simple functionality check of the vehicle's accessories and features are required. This may consist of but is not limited to Windows, AC controls, Power outlets, Radio, Lighting, and Power seats.
3. It is always best practice to disconnect the vehicles battery before any harness removal or wire splicing.

Seat Disassembly

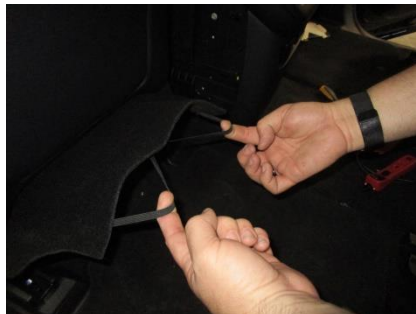
1. Using the switches located on the doors of the vehicle, move the driver and passenger seats to its most forward positioning.
2. Locate the provided vehicle specific cut template and align it directly underneath the chrome headrest band. The template should wrap around the top of the seat back from one side to the other and the square cut out should be located in the center of the seat back top.



3. Carefully mark the cut location on the vehicle's seat back.



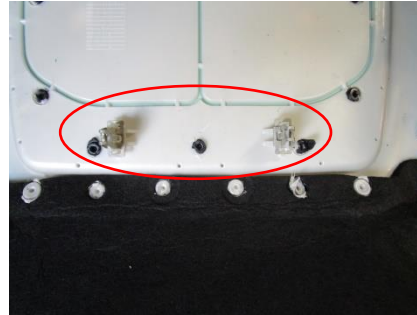
4. Carefully unhook the elastic straps of the seatback flap located underneath the bottom of the seat.



5. Using a plastic panel tool, carefully unclip the front of seatback from the rear seatback.



6. Firmly pull the bottom of the seatback towards you to release the 2 metal clips at the bottom of the seatback.



7. Grip both sides of the seatback and carefully pull the seatback towards you and downward. (Note: There are 2 clips that are located at the bottom of the headrest panel that point downward. When removing the seatback, be mindful of their location.)



Clips mentioned above

Seatback Modification

1. Start by using a razor blade to cut out the leather material around the marked area.

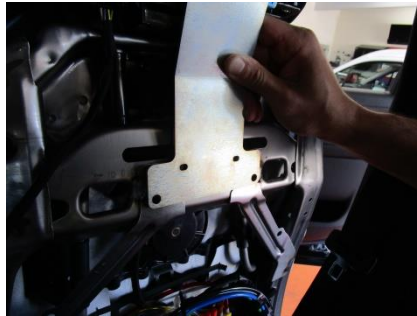
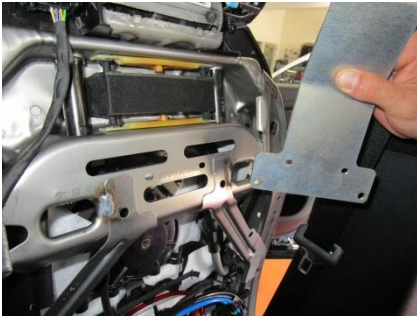


2. Using a saw or cutting wheel, cut the plastic of the seatback.
(Note: Keep in mind that to stay inside the stenciled area.)

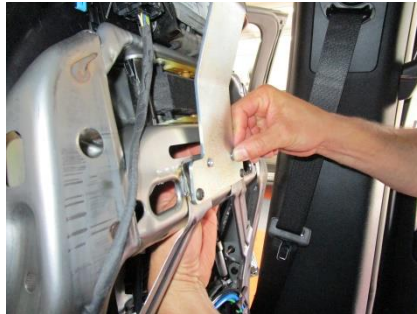
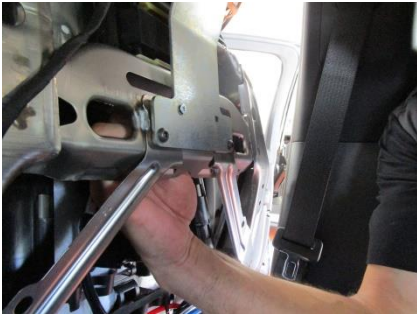


Bracket Mounting

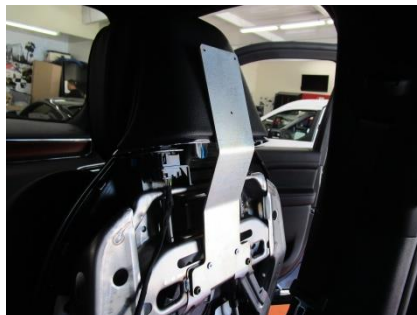
1. With the seatback removed, locate the bracket mounting holes located on the seat frame.



2. Using the provided hardware, loosely mount the seatback bracket to the seat frame.



3. Once the bracket has been loosely mounted and centered, you can begin the final tightening of the screws.

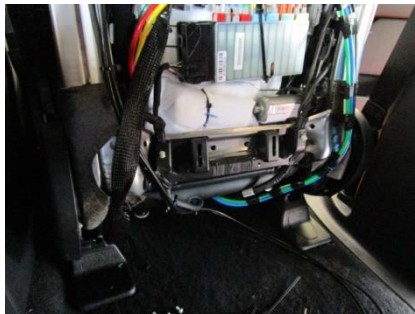


Wiring

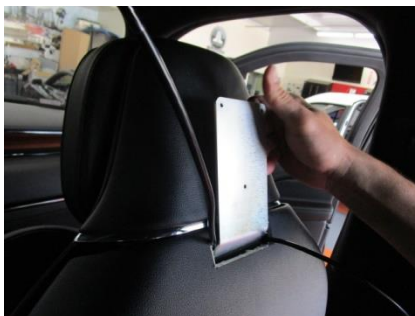
1. Start by identifying the 2 different types of post cables that are located in the kit. One post cable will have a white square tip and the other will have a red square tip. The cable that has the white colored tip is your power post cable. This cable will plug into the “Carrier Bucket” on the left side and the red square tip connector on the left side. (Note: In the below photos, the cables have been looped behind the bracket and connector colors are on opposite sides.)



2. Follow the seat's factory wiring to run the post cables down under the seat.



3. Re Install the seatback. To do this, pull the bracket forward and slide the bracket through the seatback. (Note: Be careful of the post cables and material on the back of the headrest.)



4. Clip in the bottom of the seatback. Once done, proceed to clip back in the front of the seatback.



Mounting the Bun

1. Insert the metal “back plate” into the plastic foam bucket.



2. Using the provided screws, mount the “back plate” to the “seatback bracket” and pull the wires through as shown below.

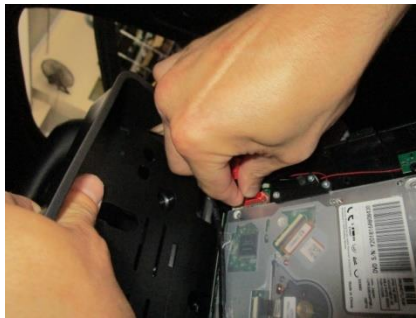


Carrier Bucket Installation

1. Use the wire channel at the bottom of the bucket to guide your post cables into the back of the “carrier bucket.”



2. Plug the white and red post cable connectors into the appropriate color coded ports.



3. Loop the post cables and clip them into the post cables clips located on either side of the DVD player. (Note: Pay special attention to the photos below on how high to have the cables and how the cables need to be twisted. If performed incorrectly cable will prevent the bucket from closing, continuously eject the DVD, or fail to let the DVD play.)



4. Insert the bucket into the headrest bun by starting with the bottom first then move to the top.
(Note: Please pay special attention to the hooks located at the bottom of the foam bun bucket and their appropriate slots.)



5. Firmly press the “carrier bucket” into headrest. Please pay special to the side of the bucket as they need to be squeezed firmly to engage the locking clips.



6. Close the door to the “carrier bucket.” Make sure there is nothing preventing the bucket from opening or closing securely.



Center console disassembly

1. Unsnap the upper side trim piece of the center console.

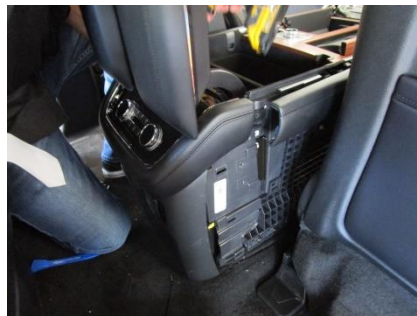


2. Unclip the forward lower trim piece as seen in the images below.

(Note: Driver side requires the removal of a 7mm screw.)



3. Remove the lower side panels of the center console exposing the 10mm screws on the back side of the center console. Remove all silver screws on the back of the console in order to remove the back of the center console.



4. After opening the center console, firmly grip the side on the back of the center console and pull towards the rear of the vehicle. (Note: Make sure to be gentle in order to not damage or lose any clips.)

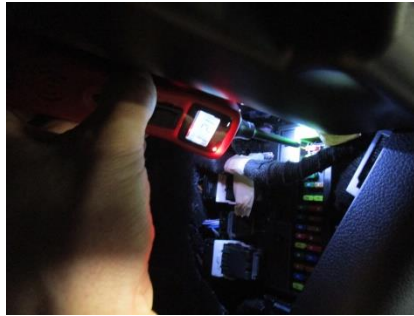


5. Located behind the center console is the cigarette lighter socket. Using a voltmeter, test both cables going into cigarette lighter for your ground. (Note: Power in the back of the cigarette lighter is constant and will not be used.)



6. Locate the fuse panel in the passenger side kick panel and tap fuse #23 for accessory power.

Power



E145984

7. Run your accessory wire underneath carpet into the front of the center console. Follow factory console wire loom to run cable back to the rear of the center console.

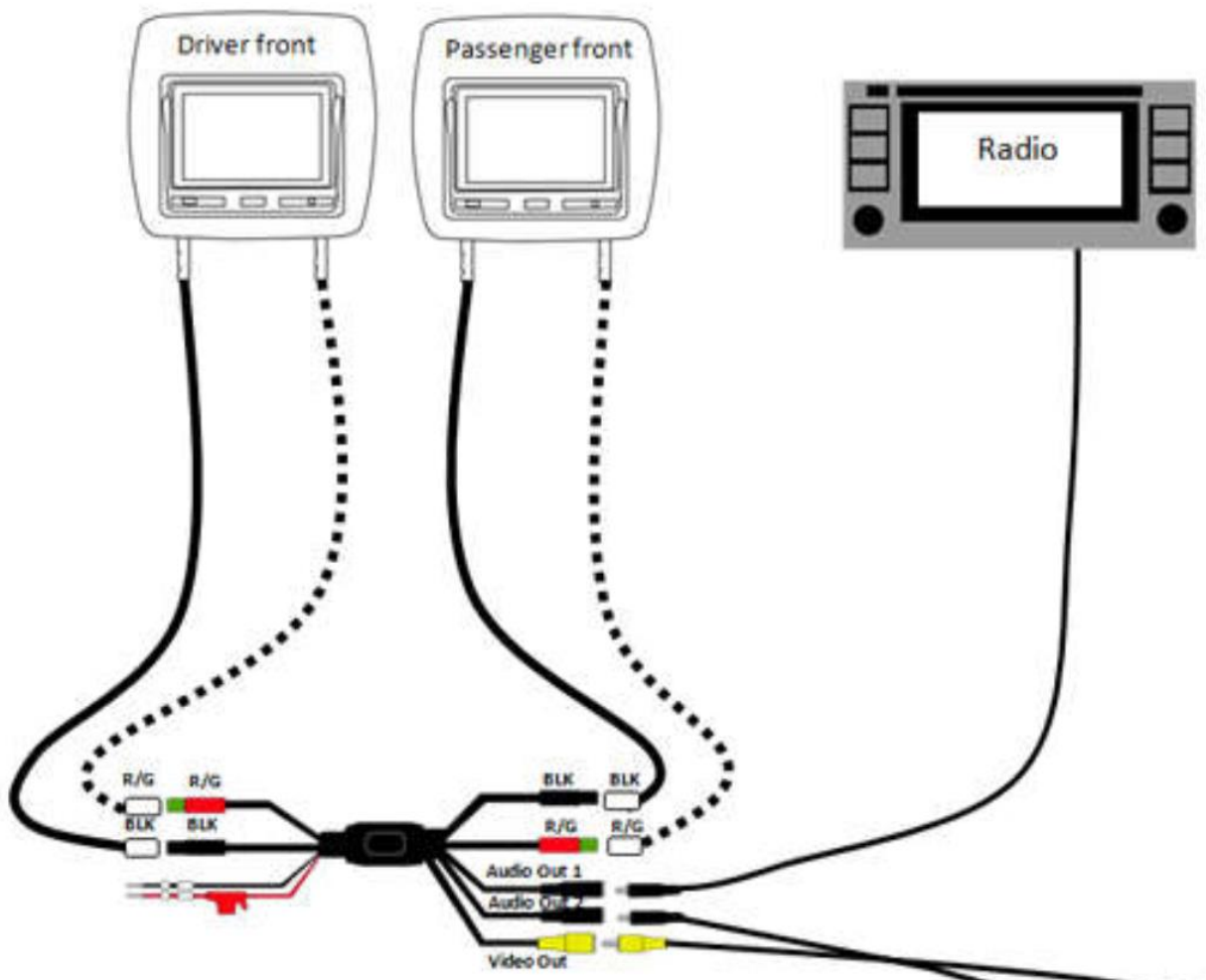


8. Using the split in the carpet underneath the front seats, run the post cable wires into the back of the center console.



9. Once all cables have been ran to the back of the center console, Follow the diagram below to complete all necessary power, ground, and post cable connections.
10. After all cables have been connected start up the vehicle and run a full functionality test of the system before reassembly.

Spider Cable Connection



Breakout cables Connection

For connection hook up please follow the diagram as shown below.

