

2016-2020 Volvo XC 90 Installation Instructions

A. Pre-Installation Precaution

1. Use floor and seat protectors to avoid damage to vehicle surfaces



Disconnect the battery prior to any ground or harness removal (recommend). The battery may be temporarily reconnected to perform such tasks as power seat repositioning, testing, or adjusting vehicle gear position (PRNDL). Once tasks are complete and the vehicle is reassembled. Disconnecting the battery may cause certain vehicle settings to be lost. Follow manufacturer's recommendations for the battery removal.

B. Seatback Removal and wire installation

1. Remove the two bottom screws located at the bottom of the seat back. (Figure B1)
2. Slide the seat back plastic upwards to remove.
3. With the seat back off you will need to unhook the material from the plastic hooks located at the top of the seat back. (Figure B2)
4. Pull up on the material and locate the plastic release clips. (Figure B3)
5. Using a flat head screw driver depress the plastic post release while pulling up on the headrest to remove the factory headrest.
6. Now slide the headrest out of the post guides.
7. Locate the left post cable wire that has the black heat-shrink end and insert it into the left post guide on the driver's side seat. (Figure B4)
8. Locate the right post cable wire that has the red-heat shrink end and insert it into the right post guide on the driver's side seat. (Figure B4)
9. Repeat steps 7-8 for the drivers side headrest.
10. Run both post cable wires down the seat and attach with zip ties to keep wire contained. (Figure B4)
11. There is a split in the carpet located under each seat. Use the split to run wires neatly and easily into the center console. (Figure B5)

Figure B1



Figure B2

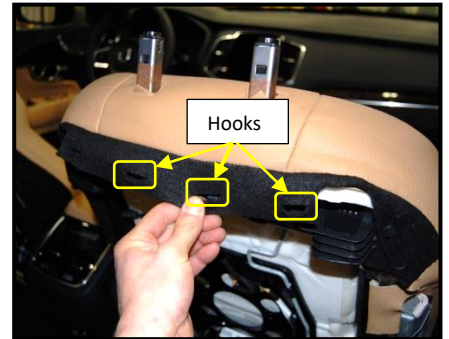


Figure B3

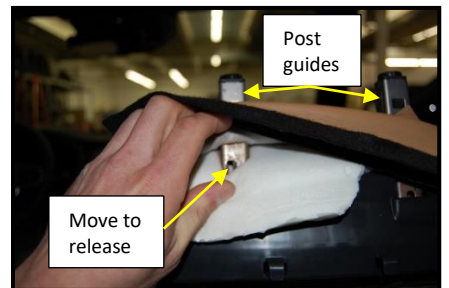


Figure B4

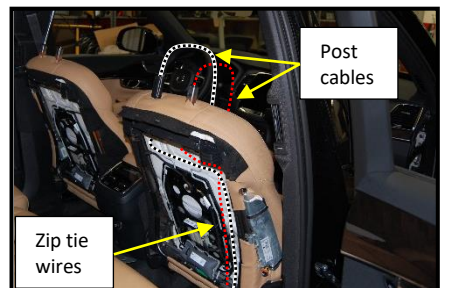
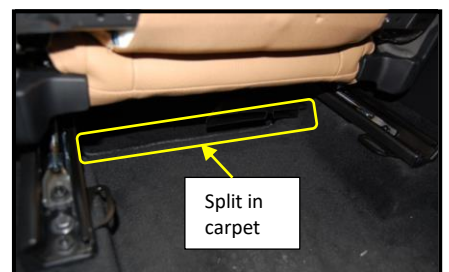


Figure B5



B. Wire installation continued

12. Run the wires into the center console area.
13. Remove the passenger's plastic panel located on the left side of the center console next to the inside of the passenger's seat. (Figure B6)
14. Remove the passenger's side kick panel. Pull back the foam and locate the fuse box.
15. Find an Accessory wire or use a fuse tap to connect Accessory power to the VAP. (Figure B7)
16. Use a relay for power if necessary. (Figure B8)

C. Connecting the PerfectMatch™ Wires to the VAP

NOTE: Make sure the post cable connector is in the proper orientation before plugging any connectors into the VAP interface. (Figure C1)

NOTE: Connector is in the wrong orientation and will not plug into VAP interface. Plugging connector into the VAP interface in the wrong orientation may damage VAP interface connector. (Figure C2)

1. Plug in the A side post cable (red heat-shrink) to the smaller connector on the VAP interface marked with the letter A.
2. Plug in the A side post cable (black heat-shrink) to the larger connector on the VAP interface marked with the letter A.
3. Plug in the B side post cable (red heat-shrink) to the smaller connector on the VAP interface marked with the letter B.
4. Plug in the B side post cable (black heat-shrink) to the larger connector on the VAP interface marked with the letter B.
5. Plug in the 2-pin power and ground connector into the VAP interface.
6. Connect the red wire to the Vehicles Accessory power wire.
7. Connect the black wire to the Vehicles Chassis Ground.

1. FM Transmitter

- a. Locate the FM Transmitter app on the tablet.
- b. The FM app is located on the Apps page.
- c. The app icon has the FM Transmitter logo:



NOTE: FM Transmitter only works when tablet is docked into the headrest

- a. Press the Power button on the screen to turn on the FM Transmitter.
- b. Use the left and right arrows to adjust the FM frequency.
- c. The audio of the selected tablet will now come through the factory stereo.

D. Troubleshooting:

1. Sharing Audio or Video does not work.
 - a. Check the large connector inside the VAP interface for any bent pins.
2. Tablet does not charge when docked and vehicle power is turned on.
 - a. Check the small connector inside the VAP interface for any bent pins.

Note: Any bent pins can be straightened if done with care. (Figure F1)

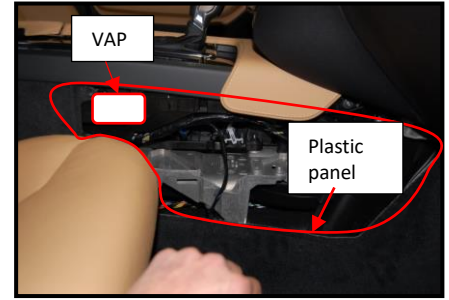


Figure B6



Figure B7

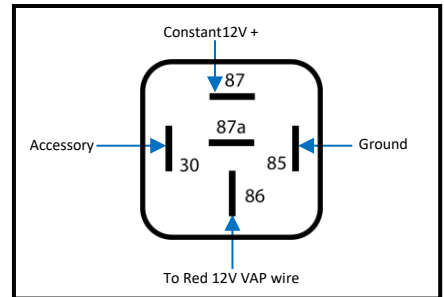


Figure B8

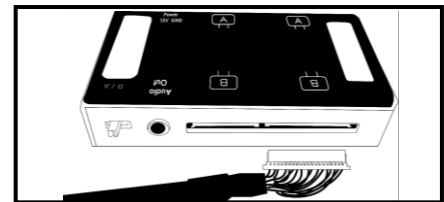


Figure C1

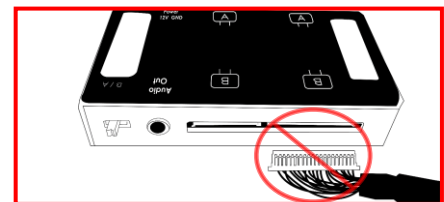


Figure C2

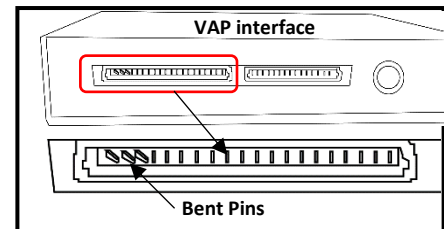


Figure D1

System Wiring Diagram

